



SIGNAL EXPERT
UNBEATABLE SIGNALS

KLSE WEEKLY
REPORT

11-02-2019



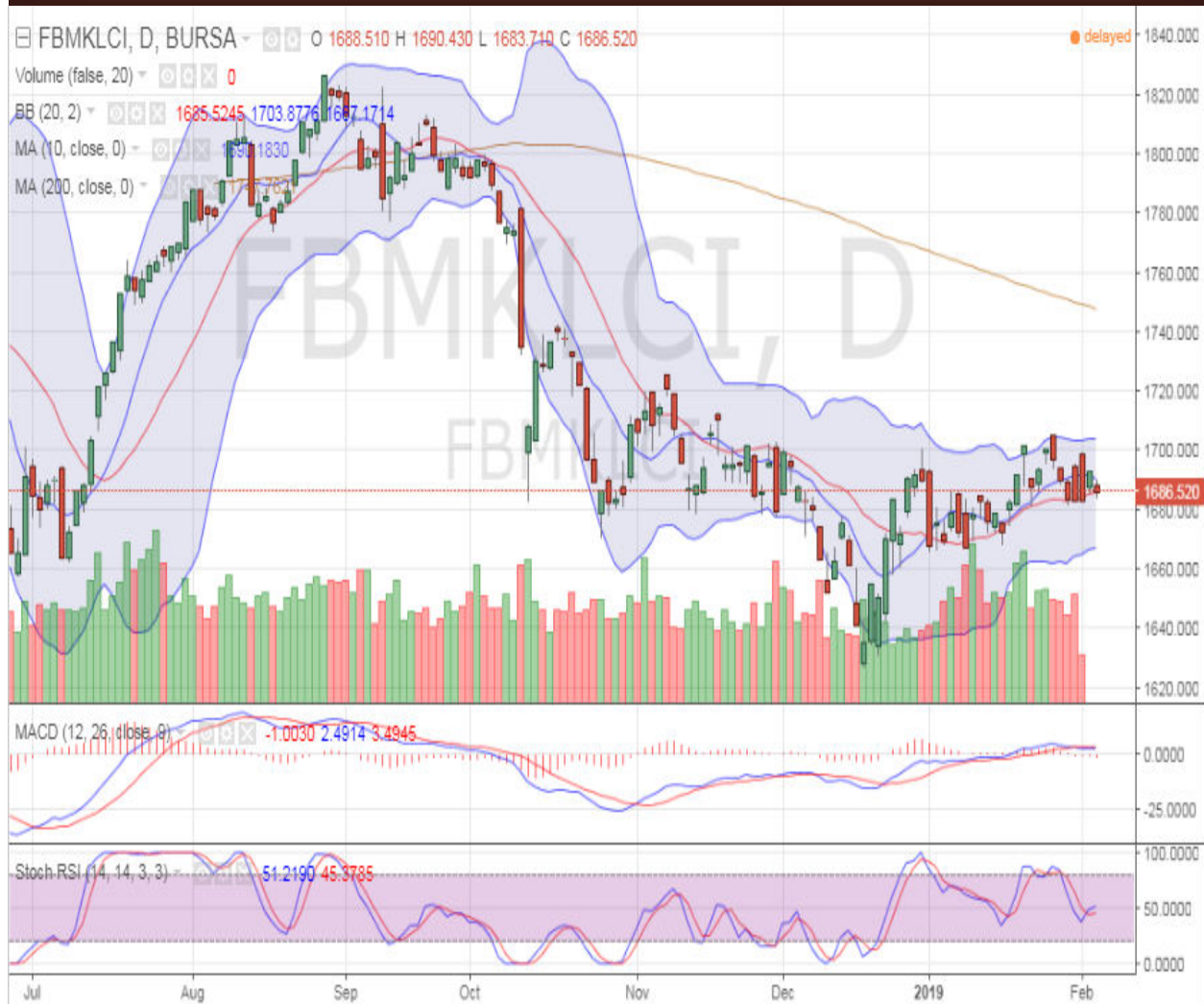


SIGNAL EXPERT
UNBEATABLE SIGNALS

**KLSE WEEKLY
REPORT**

11-02-2019

WEEKLY MARKET OUTLOOK



The FBM KLCI index gained 9.78 points or 0.58% on Thursday. The Finance Index increased 0.39% to 17639.16 points, the Properties Index up 0.96% to 946.23 points and the Plantation Index rose 0.70% to 7319.77 points. The market traded within a range of 7.82 points between an intra-day high of 1693.48 and a low of 1685.66 during the session.



SIGNAL EXPERT
UNBEATABLE SIGNALS

KLSE WEEKLY
REPORT

11-02-2019

TOP 5 STOCKS BY TRADING VALUE

COUNTER NAME	LTP	RANGE	VOLUME ('00)
SAPNRG	0.280	5.66	4,673,308
ARMADA	0.235	4.44	1,456,906
SAPNRG-WA	0.095	5.56	1,420,786
HSI-H4X	0.165	3.12	477,340
KAREX	0.435	14.47	412,978

TOP 5 GAINERS

COUNTER NAME	LAST	RANGE	VOLUME('00)
TIMECOM	8.360	3.98	12,147
QL	6.950	2.96	24,535
SAM	7.540	2.72	150
GENP-WA	2.540	7.46	1,349
LYSAGHT	2.750	6.59	7

TOP 5 LOSERS

COUNTER NAME	LAST	RANGE	VOLUME ('00)
TASEK-PA	12.100	-10.90	3
BAT	37.20	-2.11	972
F&N	33.420	-0.95	1,315
TENAGA	13.20	-1.64	47,242
ALLIANZ	13.40	-1.33	595



SIGNAL EXPERT
UNBEATABLE SIGNALS

KLSE WEEKLY
REPORT

11-02-2019

INDICES

SECTOR-INDICES	LAST DONE	CHANGE	VOLUME
CONSTRUCTION	174.43	0.58	1,571,517
CONSUMER	664.68	0.49	1,248,443
FINANCE	17,415.63	0.15	411,383
ENERGY	892.15	-21.65	4,704,316
IND-PROD	164.87	0.10	4,053,732
FBMKLCI	1683.22	0.26	28,909,817
PLANTATION	6897.74	1.00	177,986
PROPERTIES	886.20	1.11	454,390
TECHNOLOGY	29.20	0.07	157,963
FBMFLG	15213.17	-0.45	2,944,371



SIGNAL EXPERT
UNBEATABLE SIGNALS

KLSE WEEKLY
REPORT

11-02-2019

RECOMMENDATION

<u>DATE</u>	<u>STOCKS</u>	<u>STRATEGY</u>	<u>ENTRY LEV- EL</u>	<u>TARGET</u>	<u>STOPLOSS</u>
11 FEB 19	ASTRO	LONG	1.70	1.785	1.6
11 FEB 19	INARI	LONG	1.58	1.66	1.5
11 FEB 19	DSONIC	LONG	0.475	0.495	0.45
11 FEB 19	HUAAN	LONG	0.195	0.21	0.18

PERFORMANCE OF PREVIOUS WEEK

<u>DATE</u>	<u>STOCKS</u>	<u>STRATEGY</u>	<u>ENTRY LEVEL</u>	<u>TARGET</u>	<u>STOPLOSS</u>	<u>REMARK</u>
21 JAN 19	DNEX	LONG	0.28	0.30	0.24	NOT EXE- CUTED
21 JAN 19	UMW	LONG	5.82	6.11	5.5	TGT HIT
21 JAN 19	FGV	LONG	0.98	1.02	0.93	TGT ACHIEVED
21 JAN 19	AXIATA	LONG	4.05	4.25	3.84	SL HIT



SIGNAL EXPERT
UNBEATABLE SIGNALS

KLSE WEEKLY
REPORT

11-02-2019

DISCLAIMER

SIGNAL EXPERT comply with SEBI INVESTMENT ADVISOR GUIDELINES 2013, So please co-operate in providing KYC & Risk Profiling to our employees. Dear clients, SIGNAL EXPERT does not claim/give any assured/ guaranteed return, don't trade on personal calls, trade only in Company Research calls. Please beware of fraud calls/SMS & misguided advise rumors like JACKPOT,HOT TIPS, SURESHOT kind of messages. SIGNAL EXPERT do not ask any client or any person to deposit money in any Employee Or any person's personal bank account details, so never deposit money in any Employee personal account. Trading in Equity , Commodity & Forex market are always subjected to market risk, there is always high market risk involve. Please go through our website www.capitalbuilder.in for further details.

www.signalexpert.in does not take any compensation of any kind whatsoever from any company that they mention on this website. All data and reports at **www.signalexpert.in** are only information services for investors and are not individualized recommendations to buy or sell securities, nor offers to buy or sell securities. The publishers of reports, reviews and analysis under **www.signalexpert.in** are not acting in any way to influence the purchase or sale of securities. The information provided is obtained from sources deemed reliable but is not guaranteed as to accuracy or completeness or as to the results obtained by individuals using such information. It is possible at this or some subsequent date, the publishers of reports, reviews and analysis at **www.signalexpert.in** may own, buy or sell securities presented. Each user shall be responsible for the risks of their own investment activities and, in no event, shall **www.signalexpert.in** , its publishers, employees, owners or investors, be liable for any losses or damages, monetary or otherwise, that result from actions taken after reading the contents of reports, reviews and analysis published on **www.signalexpert.in** . The publishers recommend that anyone trading securities should do so with caution and consult with a broker and financial advisor before.